

# ActivIdentity SecureLogin SSO

➤ Secure enterprise single sign on

## Streamline access to corporate systems

Alleviate the burden that passwords place on end users, the help desk and administrators while increasing the protection of your network and corporate data with ActivIdentity SecureLogin SSO. A single secure login gives users access to a full range of network resources whether working remotely or at a dedicated or shared workstation. By shifting password management away from end users, SecureLogin SSO boosts worker productivity and drives down help desk costs — all while improving the enforcement of security policies and compliance.

## Key features

### Solves password management issues

- Provide users with a single identity for streamlined access to internal and external applications.
- Manage user passwords from a central location in the directory.
- Distribute policies across user groups using group policy support.

### Strengthens network security

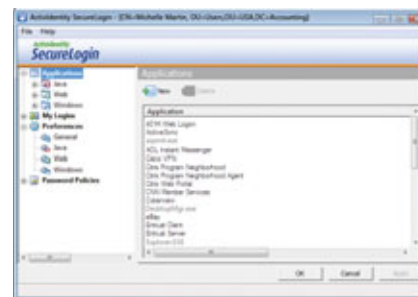
- Improve security by shifting password management from end users who might otherwise use less secure tactics.
- Add two-factor security to network and application login with ActivIdentity strong authentication solutions.
- Optional user data store encryption using PKI based credentials from smart card.
- Optional storage of credentials on smart cards for secure offline access.
- Generate one-time passwords.

### Improves security compliance

- Achieve strict authentication requirements at the application level.
- Assist with proof-of-identity, enforced access rights and auditability.

### Integrates seamlessly into existing identity management architectures

- Leverage your existing directory such as Microsoft Active Directory, Novell eDirectory, Sun Java System Directory Server, or other LDAP directory — no additional server costs and plugs into leading management consoles such as Microsoft Management Console (MMC)
- Interoperate with user provisioning systems for streamlined identity management.
- Integrate with out-of-the-box and in-house applications.



## Benefits

### Increased worker productivity

Reduce the time users spend managing passwords and logging into corporate systems.

### Secured access to data

Enforce assigned access rights and audit user authentication activity.

### Enhanced password management

Facilitate stricter policies for creating, using and maintaining passwords without burdening end users.

### Return on investment

Capture ROI with reduced help desk support costs (up to 40%), increased productivity (up to 18%), and improved user efficiency (up to 15%) according to leading industry analysts.

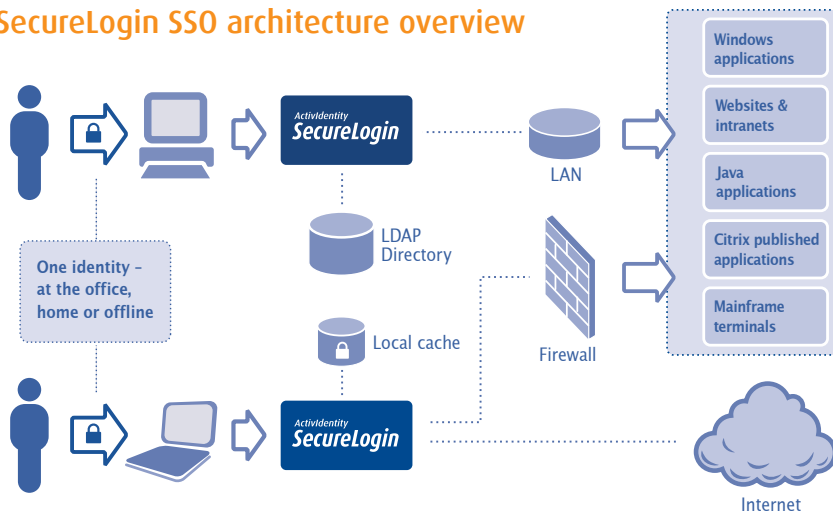
### Strong proof of identity

Require smart card, token or biometric authentication at network and application levels.

### Faster and easier logins

Provide users with rapid access to applications without the hassle of account lockouts and expired passwords.

## SecureLogin SSO architecture overview



**Directory support**

- Microsoft® Active Directory® and Active Directory Application Mode (ADAM)
- Novell® eDirectory™
- Sun™ Java™ System Directory Server
- LDAP compliant directories

**Servers**

- Microsoft Windows® Server 2003
- Microsoft Windows 2000 Server SP 4
- Microsoft Windows 2000 and 2003 Terminal Server

**Provisioning system support**

- IBM® Tivoli® Identity Manager
- Novell® Identity Manager
- Sun Java System Identity Manager

**Clients**

- Microsoft Vista Ultimate, Enterprise and Business Editions
- Microsoft Windows XP SP2
- Microsoft Windows 2000 Workstation SP4

**Browsers**

- Internet Explorer 7
- Mozilla Firefox 2.0

**Citrix® support**

- Citrix Presentation Server™ 4.0 and 4.5
- Presentation Server Client v10.0
- Published applications and desktops

**Management tools**

- Microsoft Management Console (MMC)
- SecureLogin Administrative Management Utility
- SecureLogin Personal Management Utility

**Smart Card Middleware Support**

- ActivClient 6.1
- Gemalto ACE 5.2
- Gemalto ACS 5.3
- AET SafeSign 2.3

**Single sign-on for Windows applications**

Provides predefined sign-on to applications such as:

- AOL® Instant Messenger™
- Cerulean® Trillian
- Cisco® VPN
- Citrix Program Neighborhood & Agent
- Check Point® Firewall-1™
- Cyberview®

- Entrust® Entelligence and Authority
- ExcelCare Application
- Goldmine® v5.5
- Lotus Notes® v5, v6.5 and Lotus Organizer® v4, v5
- Microsoft ActiveSync®
- Microsoft Outlook Express®
- Microsoft SQL Server
- MSN® Messenger
- Novell BorderManager® VPN Client
- Novell Groupwise® Client & Notify
- Novell iFolder® v2 & v3
- Optima
- Symantec PC Anywhere™ 8.0
- SAP®
- Targetfour HEAT Call Logging
- Yahoo!® Messenger
- and many more

**Powerful web support**

- Standard and framed web pages
- Complex forms and login pages
- Pages containing radio buttons and checkboxes
- Java AWT and SWING GUI applets and applications
- Web proxy servers

**Extensive terminal emulator support**

Full support for more than 150 mainframe, UNIX®, ANSI® and custom terminal emulators including:

- Popular 3270 and 5250 emulators from Eicon®, WRQ®, Wall Data®, IBM®, NetManage®, Jolly Giant, Pericom® and many more
- Telnet emulators from WRQ, IBM, Microsoft, Novell and Tera Term
- Many healthcare emulators, including HBO, Meditech v3.x and 4.x, Lawson® and 3M®
- Most ANSI and text-based emulators

**Security**

- Protects credentials with either triple DES or AES encryption
- Passphrase protection against unauthorized administrator access
- Optional password randomization
- Application re-authentication using smart card
- Optional user data store encryption using PKI based credentials from smart card

- Optional enforcement of smart card presence
- Optional password storage on smart card
- Supports SNMP error and event monitoring
- Application layer of administration security in addition to directory-based ACL data security
- Built-in security prevents unauthorized access to user credentials
- Supports login, password change, expiration and almost all application error conditions

**Deployment**

- Distribution via Novell ZENworks®, IBM Tivoli, Microsoft SMS and CA® Unicenter®
- Attribute provisioning tool provides bulk import of user credentials from third party applications
- Import and export functions allow settings and data to move across different directories
- Digitally signed and encrypted XML files available for configuration distribution
- Supports Microsoft Group Policy Object for control over credential and application definition
- Novell eDirectory group support

To find out more about SecureLogin SSO or register for a live product demonstration, visit

[www.actividentity.com](http://www.actividentity.com)

**Americas** +1 (510) 574 0100

**US Federal** +1 (571) 522 1000

**Europe** +33 (0) 1 42 04 84 00

**Asia Pacific** +61 (0) 2 6208 4888

**Email** [info@actividentity.com](mailto:info@actividentity.com)

**ActivIdentity®**